



**HALLMARK LOCKS**

**YOUR SECURITY PARTNER**

# About Us

The core business of **Hallmark Locks** is towards providing a smart electronic security solutions to the hospitality industry, commercials, rental condominiums, private apartments, hostels and other facilities where people need smart security solutions – each solution with smart lock is designed to meet our client's needs for security.

The drive is entirely putting our heart & soul into your security. **Hallmark Locks** strives to become your true security partner, devoted to offer you reliable, flexible and valuable security solutions.

With the advent of integrated systems, we bring in a combined easy-access, digital key and smart guest rooms, with unified **property management systems**(PMS) that protect individuals and assets. **Hallmark Locks** is here to provide an advanced and aesthetically designed hospitality-specific electronic access control solutions that set a new standard in the industry– from back-of -house organization to guest room management – with one easy to use system for hotels of all types and sizes.

# Mission Statement

Our prime mission is to provide our customers with a combination of safety and convenience. Finding the equilibrium between safety and convenience also means that we cannot compromise safety.

As basic as the concept of a lock may be to a consumer, the proper implementation is more difficult to achieve – which is why we strive to find a way we implement safety and convenience as seamlessly as possible into our customers' daily lives



**HOTEL  
LOCKS**

# Systems & Software

---

BIS Hotel (Be-tech Information System) is a fully-featured, functionality-rich intelligent system with the power, flexibility and convenience to satisfy the needs of any hotel



# BIS-HOTEL (Be-tech information System) allows you to:

- Configure access control in your hotel
- Add locks to rooms
- Issue cards for admin, repair-men, staff and guests
- Decide who can enter specific rooms
- Create access zones e.g. car-park, SPA
- Control all elements of the One key system





**HOTEL  
LOCKS**

# Contactless Key

---

Mobile key app gives guests the ability to use their smartphones for mobile entry to their hotel rooms



# Your Phone, Is Your Key

Allow Your Guests to Check-in and open their door(s) with their smartphone

## How it works!



### One Time Setup

Download the app  
And verify your details



### Automated Key Delivery

The mobile key is sent  
immediately upon  
check-in for a  
seamless experience



### Room Access

Simply presses  
mobile key button and  
holds phone to lock for  
secure access



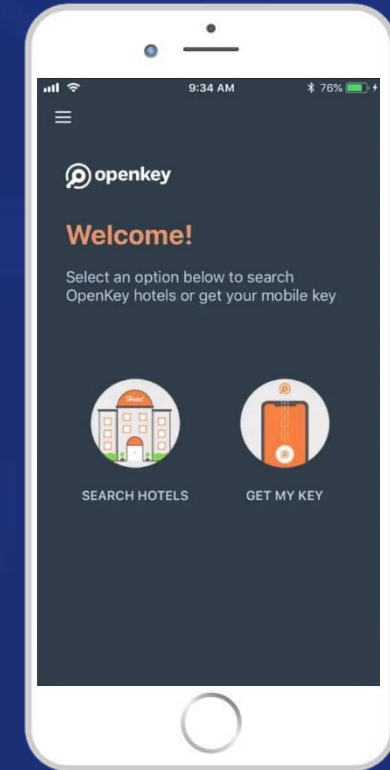
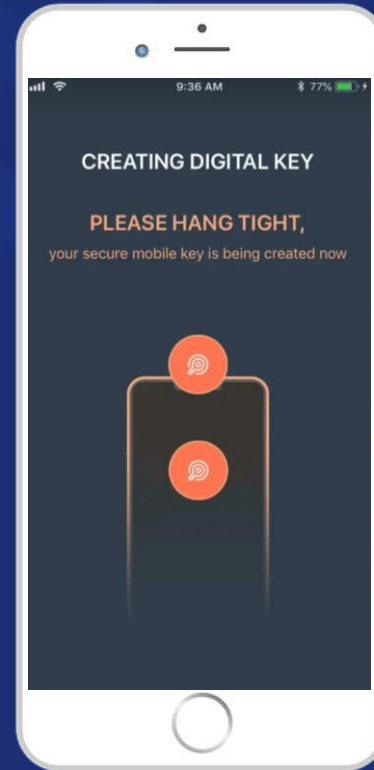
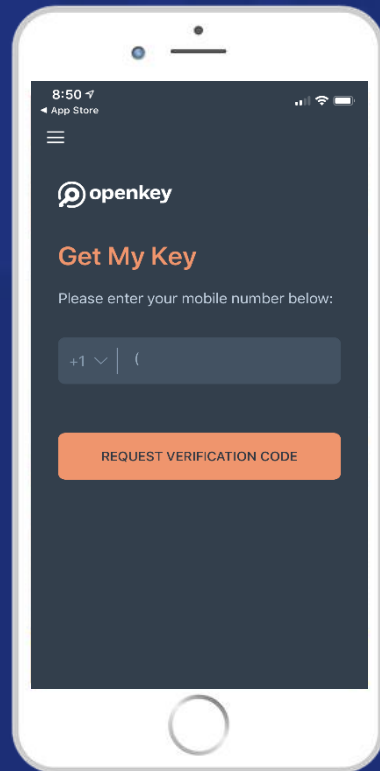
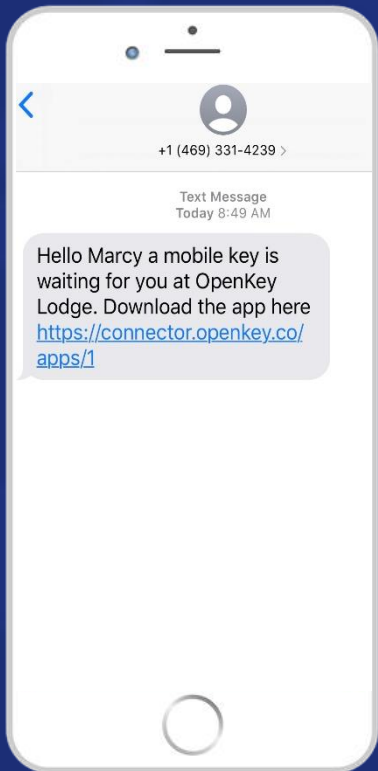
### Check Out

Guest can send  
check-out request  
from within the app  
for convenience

# Mobile Key Experience

Check in ahead of arriving and take advantage of all hotel services

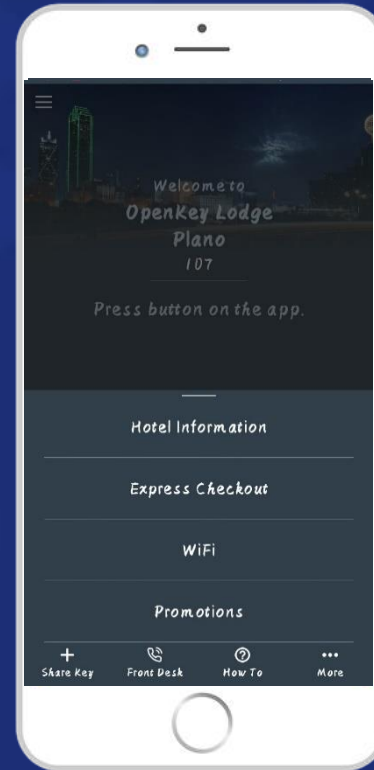
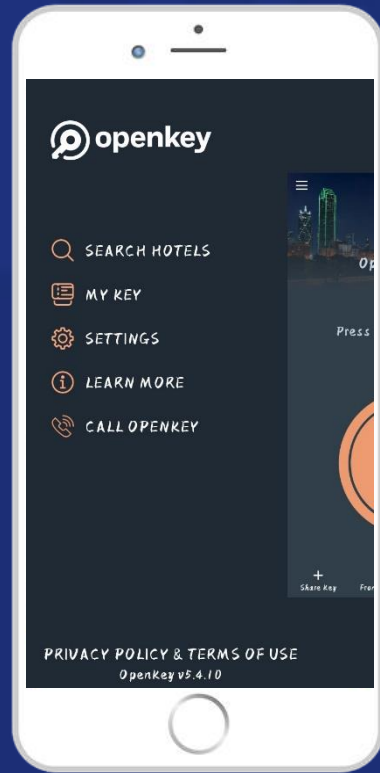
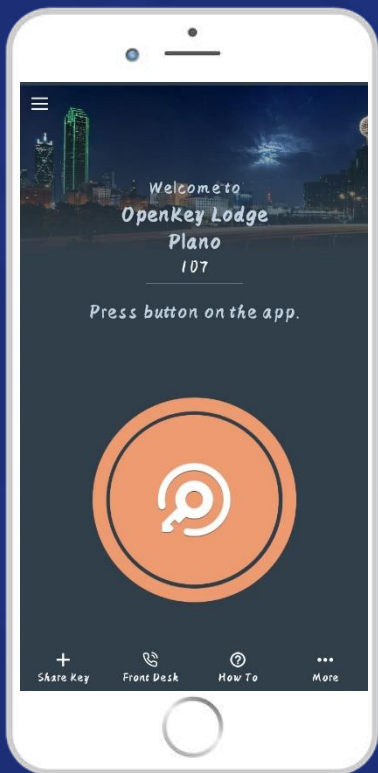
...how it works!





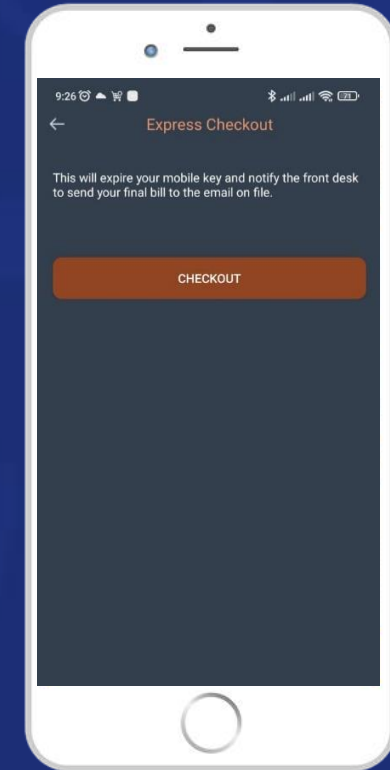
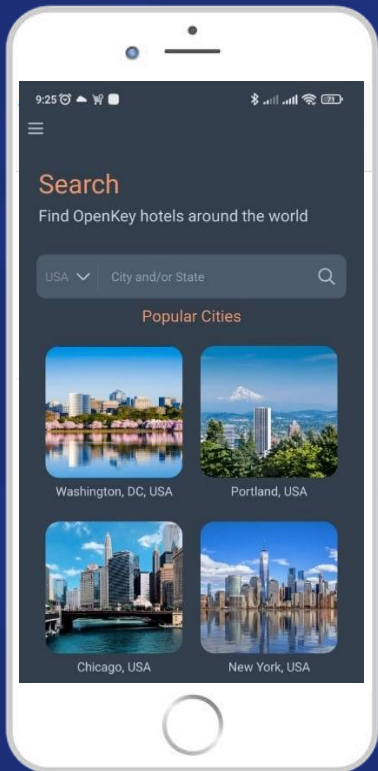
# Enjoy Convenient Benefits

Get hotel information and communication – You can communicate directly with the hotel management and see all **hotel services, announcements** or **events**.



# Enjoy Convenient Benefits

Find open key **hotels** around the world, **dining places**, **fitness centers**, **markets**, **bars** etc.



# Mobile Key Capabilities

Get hotel information and communication and take advantage of the hotel services. Find Open Key hotels around the world, dining places, fitness centers, markets, bars etc.



Call/Chat The  
Hotel Desk



Dining



Fitness



Bar



Valet



Pool/Swimming



Blog



Market/Shopping

# Unlock Your Hotel Rooms With A Smartphone

## Benefits To Your Guests

- Mobile check-in/check-out. With an option to skip the front desk
- Check-in from anywhere
- Hotel information & communication
- Securely share keys conditionally



## Benefits To Management

- Automate check-in and check-out
- Eliminate key cards & physical keys cost
- Generate & view hotel activity reports
- Gather feedback upon client check-out

# Let's get your locks ready to seamlessly work with our Digital Key

Mobile Key utilizes BLE (Bluetooth Low Energy) Technology



## Full Service Digital Key

Seamless contactless technology



## Lock Upgrades

Already have BLE enabled locks?  
Easily add mobile key to your existing locks using our Universal BLE Upgrade module



## Digital Locks

The most flexible solution for future all-in-one card applications

# Brands we've worked with

On the mobile application upgrade

ASSA ABLOY

infor

ORACLE | micros  
Opera

  
BE-TECH

dormakaba 

Maestro  
Unparalleled Hospitality Solutions

SMS  
SPRINGER-MILLER SYSTEMS

ENTRAVA

HÄFELE

MEWS

  
HotelKey

 MIWA

SALTO  
inspired access

STAYNTOUCH<sup>®</sup>

RoomKeyPMS



**HOTEL  
LOCKS**

# Electronic Keys

---

The most flexible solution for all-in-one card applications



# Unlock Your Doors With A Card

A card provides easy access to rooms and gives a new and advanced experience to your guests.

With RFID hotel door locks, customers can only open the door in valid time and use the hotel-authorized key card



Electronic  
Hotel Lock



Fingerprint, RFID Card  
And Touchpad



Electronic Hotel  
Card Lock



Fingerprint, RFID Card  
And Touchpad



# Digital Smart Locks

Provide a convenient, comfortable, safe, and secure experience for guests throughout their stay

It is safe, convenient & efficient



Fingerprint Recognition



Touchpad



Card



**HOTEL  
LOCKS**

# Energy Management Systems

---

Perfect solution to provide convenience to your guests and saving energy and money when guests are not in the room. Insert your room card into a wall slot when you enter the room.

# Energy Control Unit

Perfect solution to provide convenience to your guests and saving energy and money when guests are not in the room. Insert your room card into a wall slot when you enter the room.

Insert your room card into a wall slot when you enter the room. This turns the electricity on. And when you leave, you take your room key and thus turn the electricity off.



# Wireless Energy Management System

Occupancy fluctuations, keeping guest accommodation competitive and increasing energy cost are just some of the concerns facing the hospitality industry

Taking control of, and optimizing operational systems can result in energy saving of more than 20% and card costs



**Unlock doors  
with phones**



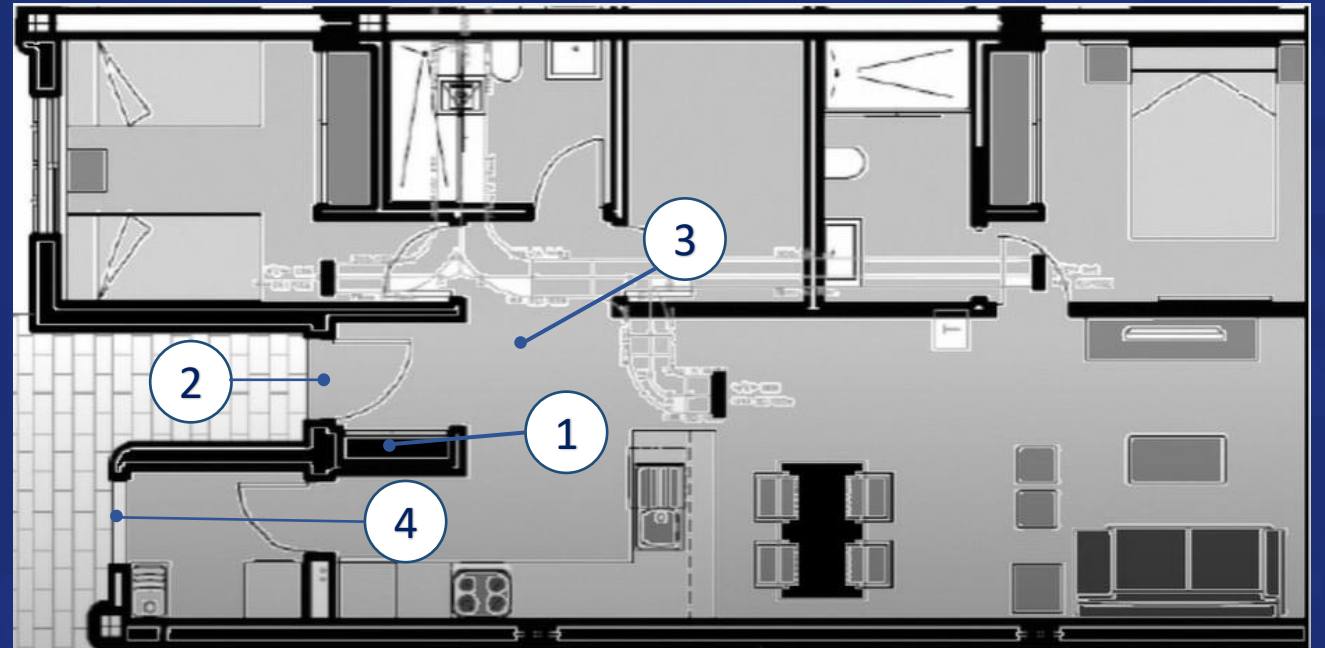
**No Card  
Costs**



**Motion  
Sensors**

Reducing energy cost should not compromise your guests' comfort. An intelligent solution will allow you to increase the efficiency of your A/C system and therefore dramatically reduce your energy bill and improve your bottom line.

1. Din rail mounted cardless energy saver  
(In the electrical panel)
2. Surface mounted door sensor (On the door frame)
3. Surface mounted door sensor (On the ceiling)
4. Surface mounted door sensor (On the window frame)



# Energy Saving

When it comes to your property's energy costs, unnecessary lighting, cooling and heating for hours can pose a significant drain on your bottom line.

## How it works!

An intelligent Energy management Solution will take control of the room temperature when the room is not occupied; never allowing it to be either too warm or too cold according to the hotels preferences.

As soon as the guest returns to their room, the system automatically returns to the guest temperature and lighting settings





# Energy Management System

## Energy Saving Through Wireless Technology



### Service Functions

Our Energy Management System supports a wide range of service functions that provide better communication to hotel staff e.g. Do Not Disturb



### Air Conditioning Management

An intelligent system will take control of the room temperature when the room is not occupied



### Lighting Control

Lighting can be controlled through setting one of three modes:

- Guest Presence
- Manually Controlled
- Lighting With Scene Control

# Ensure Guest Comfort

## Other feature offering



### Access Control & Room Presence

Our system provides room access control interfacing to the latest technologies such as chip-cards and RFID cards (contactless cards)



### Alarms

Manages alarm features used in bathrooms, living rooms and bedrooms. System support alarms during evacuation, intrusion, flooding, surveillance etc.



### Other Features

Property Management System (PMS) interface, Passive Infrared Sensor (PIS), Occupancy detection, Drape control, Watt-logging etc.







#### HVAC CONTROL (HEATING, VENTILATING AND AIR CONDITIONING)

Enjoy heating and cooling that matches your preferences. Save on energy with an HVAC system that automatically adjusts to outside temperature.



#### LIGHTING CONTROL

Zenros's universally designed guestroom lighting control system is easy to install and use. Individual components - dimmers, switches, keypads - are controlled.



#### DRAPE CONTROL

An easy-to-install unit allows guests to remotely control drapes, blinds, shutters, and curtains on windows and lanai doors.



#### SOLAR POWER

No cable pulling. Install the panels wherever you like. The panels are powered by indoor Solar and use ZigBee for wireless communication.



#### SCENE CONTROL

Dim the lights, turn off certain lamps, or close the drapes with just one push of a button - you can control the ambience and set the "scene" in your room for reading, sleeping, TV watching, and more.

# Know When A Guest Is In The Room

*Using a combination of a Wired or Wireless Motion sensor in the room and a Contact sensor on the door, our system is able to accurately determine if a guest is in the room*

After the guest room door opens our motion sensor scans the room to detect if there is a guest presence. If the motion sensor detects any motion during its scan, the room setting is changed to "Guest Present"

The hotel room occupancy status is re-evaluated every time the guest room door opens and closes. Only hotel staff can obtain the occupancy information leaving guests in undisturbed privacy and comfort.



# When A Guest Is Not In The Room

*Having interfaced the Energy Management System (EMS) with the Property Management System, the EMS knows from the check-in/out status whether a person in the room is a guest or hotel staff.*

If the guest room is checked-in but unoccupied, the system allows the guest room temperature range to be colder or warmer than when the room is occupied as well as turning off any lighting.

Immediately when the Energy Management System recognizes guest presence from the contact sensor or/and the motion sensor, the guest settings for temperature and lighting are restored.

*Maintenance can be managed more efficiently knowing remotely when the guest is not in the room*





**HOTEL  
LOCKS**

# Digital Hotel Signage

---

Touch panel with visual LED backlight room number display

# Custom Hotel Signage

*Our hotel signs are an elegant combination of design, innovation and technology*

We are happy to supply our hotel signs according to a customized design based on your preference





# Hotels With Energy Management System Installed

- W Hotel, Oman
- VIP Hotel, Qatar
- Melia, Kish
- Grand Mercure & Ibis Styles, Dubai
- Le Meridien, Dubai
- Mpvenpick, Dubai



**HALLMARK  
LOCKS**

**The End!**

**Thank You!**



**HALLMARK LOCKS**

YOUR SECURITY PARTNER

Contacts - +254721624959 / +254728413939 | [locks@hallmarklocks.com](mailto:locks@hallmarklocks.com) | [www.hallmarklocks.com](http://www.hallmarklocks.com)